



THE
KIA
OVAL

The Kia Oval Match Day Guide





GETTING TO THE KIA OVAL



BY CAR

No match-day parking is available at, or in the vicinity, of the ground and we advise all fans to use public transport.



BY BUS

Route numbers 36, 185 and 436 stop outside the ground and the following buses stop within a five-minute walk of the Kia Oval: 3, 59, 109, 133, 159, 333.



BY NATIONAL RAIL

The Kia Oval is located just a ten-minute walk from Vauxhall station, which is served by South Western Trains coming in and out of Waterloo.



BY BIKE

Spectators are encouraged to use sustainable modes of transport such as walking or cycling to the ground from nearby transport hubs or local destinations.

A limited number of bike parking spaces are available within the Kia Oval for the Rothesay County Championship and the Metro Bank One Day Cup. Located at the Vauxhall end of the ground, this is available on a first-come, first-serve basis.

On major match days, such as Vitality Blast, The Hundred, and international games, limited bike parking spaces will be made available on the closed roads adjacent to the ground, spaces will be available on a first-come, first-served basis and parking will be at the owner's risk. On-site bike parking will NOT be available.

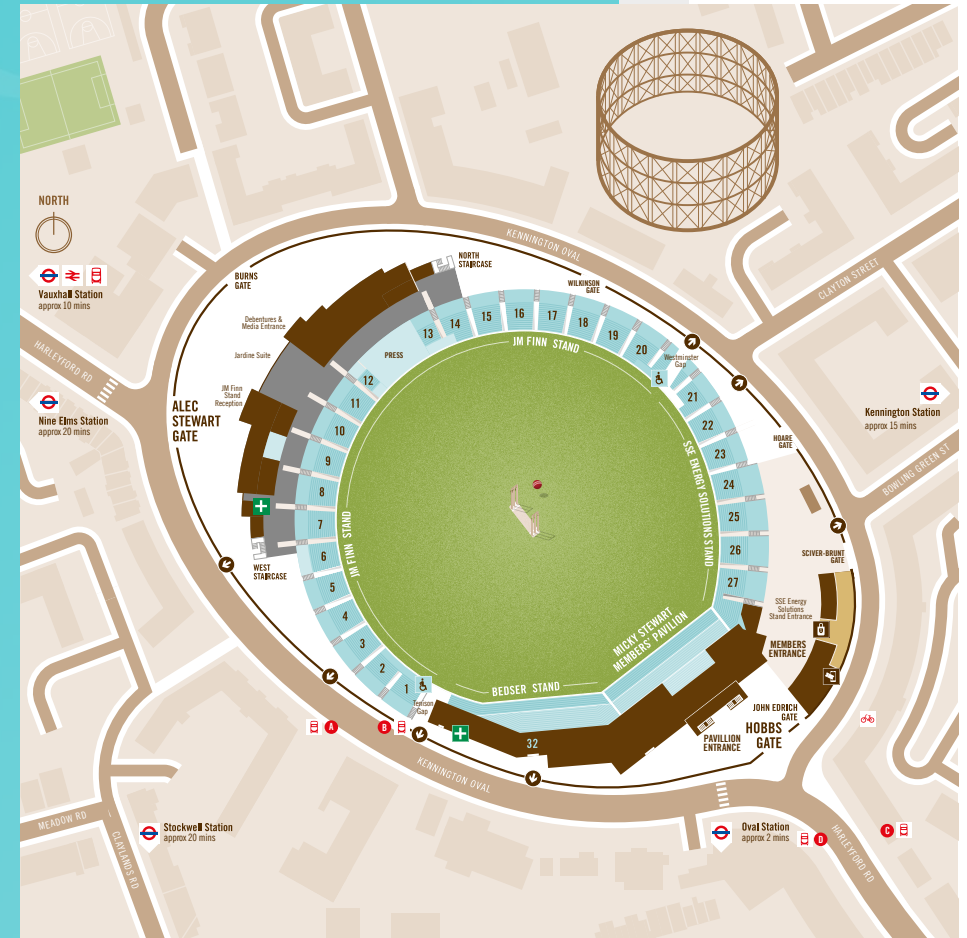
There are multiple Santander bike docking stations located close to the stadium. Additionally, there are bicycle stands to secure your own bicycles in surrounding areas. Spectators are advised to bring their own locks to ensure the safety of their bicycles.



BY LONDON UNDERGROUND

The Kia Oval is easily accessible on both the Northern Line and the Victoria Line. The Northern Line serves the Oval best with Oval Tube Station being a two-minute walk from the ground and Kennington Tube Station a ten-minute walk. Vauxhall Tube Station, a ten-minute walk from the Kia Oval, and is served by the Victoria Line.

GROUND MAP



Above is a ground map of the Kia Oval for you to familiarise yourself with the ground before attending a match day.



HOW TO DOWNLOAD YOUR TICKETS

Please follow the instructions below to download the tickets that you have purchased:

1. Search **the Kia Oval** on your respective Apple or Google Play Store.
2. Download the **Kia Oval App** with the famous Surrey Brown-coloured icon.
3. Click **Log In** and follow the on-screen instructions by entering your email address associated with your Surrey Ticketing Account. It's important to enter the same address that you would ordinarily use to purchase your tickets or Membership under.
4. Enter the **Registration Code** that is sent to your email address to activate your account on the app and follow any on-screen instructions to complete the **About You** section with up to date personal details.
5. Once saved, tickets associated to the email addressed used to log in, will appear in the app. Please note, this will currently only be for Surrey's early season fixtures, and all future tickets will be accessible in due course.
6. Double check that the old app (white icon) has been removed from your device as tickets will no longer be accessible via this application.

Please note that you do not need to print your ticket(s), as these can be scanned from a mobile device.

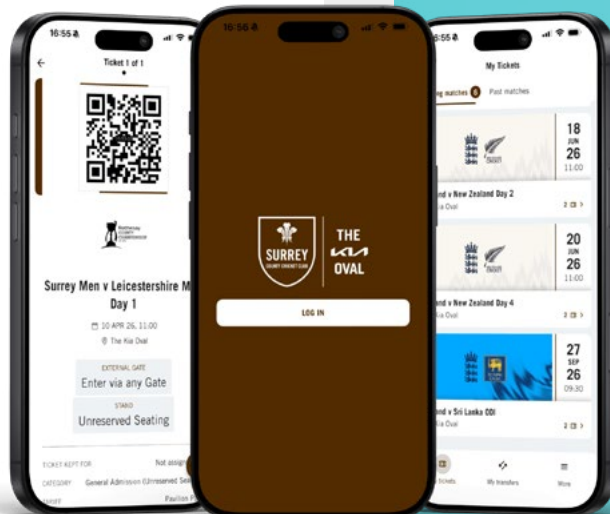


Download via
Google Play



Download via
the App Store

If you have any issues or require assistance, please contact our Member and Supporter Services on **0203 946 0100** or membership@surreycricket.com

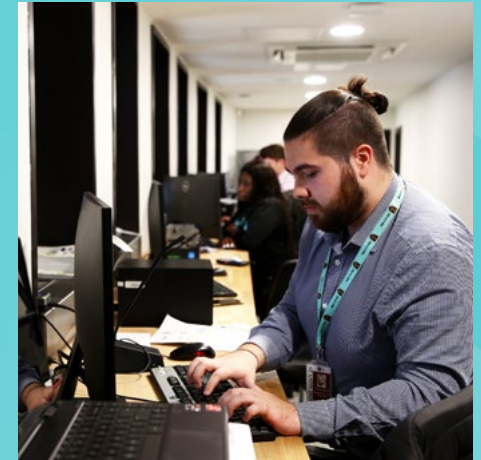


TICKET OFFICE

The Kia Oval Ticket Office is located at the Pavilion End of the ground within the SSE Energy Solutions Stand. The Ticket Office is open at least one hour prior to the start of play on all match days and is closed on non-match days.

Tickets are available for all non-sold out matches from the Ticket Office.

If you need to collect tickets from the Ticket Office prior to the start of play, the ticket purchaser will need to show a form of ID (e.g. a drivers license or the bank card used for payment) to staff in the Ticket Office. Tickets will not be released to anyone who is not the ticket purchaser.



SCANNING YOUR MEMBERSHIP CARD

All Membership cards for 2026 are now available through NFC technology. Search **NFC Membership Card Now Available** in your email app on your phone to access your card on your phone's wallet. Physical Membership cards are eligible to enter the ground. Members entering Members' Areas, including Micky Stewart Members' Pavilion, Peter May Garden, Lock Balcony and Laker Balcony, will have to scan their Membership Card and again when exiting. This will be implemented across all of Surrey's home domestic fixtures in order to ensure we have an accurate breakdown of attendance within the Members' Areas. This information will enable us to ensure we are offering the very best service in the Members' Areas, and they do not go beyond capacity.





VENUE OPENING TIMES

Domestic Match days:

Gates open 1 hour before the first ball for all domestic fixtures including County Championship, Vitality Blast and One Day Cup. Specific start times for each competition vary by fixture and will be communicated to all ticket purchasers and Members ahead of time. Start times can also be viewed on our fixture list on our website, or on your tickets.

International Match days:

Gates open 2 hours before the first ball for Men's Test Match and ODI, with gates opening 90 minutes before the first ball for Women's T20 World Cup. Specific start times for each competition vary by fixture and will be communicated to all ticket purchasers and Members ahead of time. Start times can also be viewed on our fixture list on our website, or on your tickets.



YOUR SAFETY IN AND AROUND THE GROUND

The Kia Oval takes the safety and security of all guests very seriously and as such, there will be enhanced security measures in place for all our events.

When arriving to the ground by foot, please use the pedestrian crossings at both the Vauxhall and Oval end of the ground as the roads are very busy. If you arrive using TfL's London Santander Cycles, please ensure that you park them in the allocated docking stations. If you use any other alternative cycle-hire scheme, please also park these in an appropriate position away from the roads.

We strongly advise that all fans arrive to the ground early to avoid any delays in entering.

Please be aware of the risks of cricket balls entering the stands from the field of play. We ask that all fans stay vigilant of airborne cricket balls whilst in their seat and in the vicinity of the playing field. It is also important for fans to be cautious of ball games when walking around the concourse of the ground, particularly during breaks in play.

We also suggest wearing comfortable and sensible footwear, as the ground has many stairs and changes of level.



CLUB SHOP

The Surrey County Cricket Club Shop is located in the SSE Energy Solutions Stand and can be accessed from the concourse level. This has step-free access and is wheelchair friendly.

In addition to featuring the full range of Surrey Castore kit, Castore training wear, and merchandise for men, women, and children, the Club Shop also stocks England's Castore range for International fixtures.

The Club Shop is open on match days and closes 30 minutes after the last ball has been bowled. For Vitality Blast and International match days, the Boundary Shop will also be open.



FOOD & DRINK

There are many food and drink outlets around the ground with the majority offering vegetarian and vegan food options, as well as children's portions.

On T20 match days, the Kia Oval has a food village at the Vauxhall End of the ground featuring some of London's finest street food vendors.

Surrey County Cricket Club Members can enjoy the numerous bars, cafes and restaurants within the Members' Pavilion and the SSE Energy Solutions Stand on a match day.



WHAT YOU CAN BRING

The International Cricket Council (ICC) has implemented a ban on the importation of alcohol, glass containers and metal cans. Following close consultation with the Police and Health and Safety advisors, alcohol will not be permitted on the following match days: Test Match, One Day International, Vitality Blast and The Hundred.

For other match days, such as Rothesay County Championship and Metro Bank One Day Cup, alcohol importation is restricted to a maximum of four 500ml cans of beer/lager or a 750ml plastic container of wine per person. No further alcohol will be permitted on any subsequent re-admission to the ground.

Members and fans are welcome to bring food into the ground on match days.



REPORTING INCIDENTS

If you see or hear discrimination around you, help us report it – even if it wasn't aimed at you.

Speak to your nearest steward or scan one of the QR codes around the ground to help us Stump It Out.

We also advise you report this to the Club at equality@surreycricket.com should you feel this requires further investigation.



CONDITIONS OF ENTRY



No Knives
Cutlery is acceptable



No Musical Instruments
Without prior permission



No Alcohol



No Fireworks



No Glass



COMPLAINTS

If you wish to raise a complaint on a match day, please talk to your nearest steward or report it via the QR code.

To provide further feedback to the Club regarding a match day issue, please email us at customerservice@surreycricket.com.





ACCESSIBILITY

We have a dedicated Accessibility Liaison Officer, Theresa Peters, who can assist with any queries you have related to your experience on a match day via accessibility@kiaoval.com or 0203 946 0100.

Accessible toilets at the Kia Oval are located in the JM Finn Stand behind Blocks 2 and 19, by Entrance 22 of the SSE Energy Solutions Stand and between Entrances 31 and 32 of the Bedser Stand. The majority of these toilets require a RADAR key. If you are not in possession of a RADAR key, please contact the nearest steward who will source one for you. Emergency cords are situated in all accessible toilets.

The majority of our catering points have been adapted to offer low level service points. Where these are not available, our staff will be more than happy to source any product for you.

Induction loops have been installed in a number of the seating blocks in the ground. In addition, all receptions, tickets offices, and many of the catering outlets also have this facility. Switching your hearing aid to M or T can access the system.



Accessibility Liaison Officer, Theresa Peters



FIRST AID

First aid services are provided on-site at every match day at the Kia Oval. If you require first aid assistance whilst at the ground, please contact your nearest steward or go to one of our first aid centres located behind Block A of the JM Finn Stand and between Entrance 32 and 33 of the Bedser Stand.



FACILITIES

Toilets are located all around the perimeter of the ground, with disabled and baby changing facilities located behind Block 1, 13 and 19 of the JM Finn Stand.

Changing Places accessible toilets are located under the SSE Energy Solutions Stand, next to the Club Shop.

- Female Toilets
- Male Toilets
- Accessible Toilets
- Baby Change
- Ambulant toilets
- Changing Places
- Lift
- Lost and Found
- Multi-faith Prayer Room
- Stadium Entrance
- Defibrillator
- First Aid
- Accessible Seating
- Bar
- Hot & Cold Food
- Shop
- Ticket Office
- Water Fountain/Refill
- London Underground
- National Rail
- Buses
- Santander Cycles





THE

OVAL

Thank you for reading
We hope you enjoy your
visit to the Kia Oval

